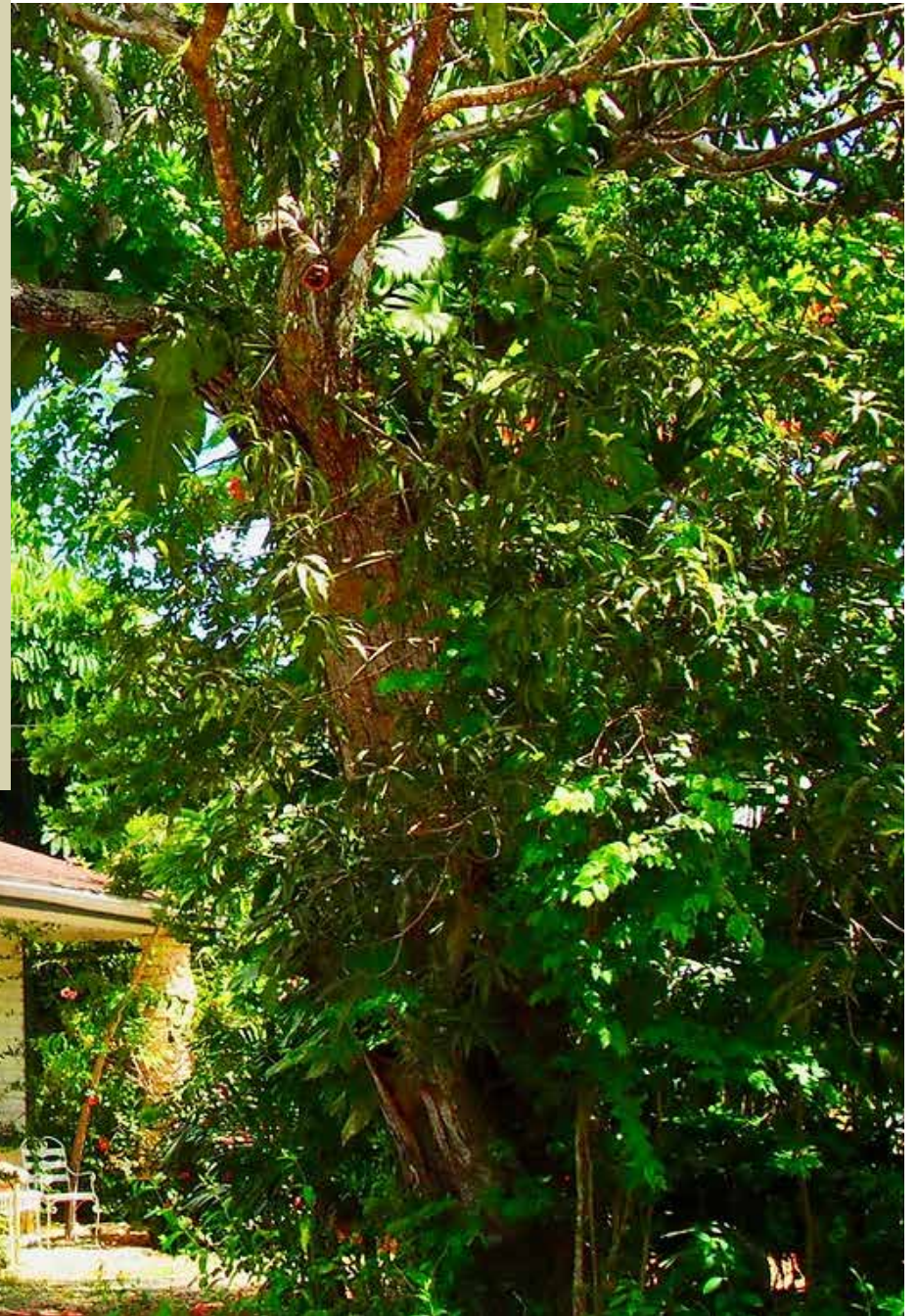




WELCOME TO BEACON FARMS

Sponsorship Deck



Welcome to **BEACON FARMS**



Nestled in the heart of the Cayman Islands, Beacon Farms stands as a testament to the transformative power of agriculture. At its core, Beacon Farms is more than just an agricultural enterprise; it is a beacon of hope and resilience, dedicated to nurturing growth, fostering recovery, and building a sustainable future. Our mission is multifaceted, focusing on helping individuals seeking a second chance in life through meaningful employment in agriculture, while simultaneously driving forward the agenda of sustainable farming practices within the Cayman community.

Through our innovative approach to farming, we provide a platform for individuals in recovery from substance abuse to engage in meaningful work, gain valuable skills, and rebuild their lives in a supportive environment. This unique combination of social reintegration with agriculture not only aids in personal transformation but also contributes to the local economy and the food security of the Cayman Islands.

A key aspect of our mission is to increase agricultural literacy among the local population. By educating the community on sustainable farming techniques, crop diversification, and the benefits of locally grown produce, Beacon Farms is at the forefront of creating a more informed and self-sufficient society.

However, Beacon Farms only exists because of the generosity of our sponsors. Whilst Beacon Farms is a non-profit organisation with earning power, we aren't yet self-sustainable. Your support therefore is not just a financial contribution; it's a lifeline that enables us to continue our vital work in the Cayman Islands. Until we can do it for ourselves. Every sponsorship is an investment in human potential. Without it, our ability to impact lives and foster change would be significantly diminished. We invite you to join us on our journey.

Our farm HISTORY

7+

Years of
Growth

12+

Caymanians
Employed

34+

Acres of
Farm Land

25+

Variations of
Produce

Beacon Farms is a community-centric initiative that has changed lives through its unique blend of agriculture, innovation, and recovery. It stands as a beacon of hope and transformation in the Cayman Islands.

Established on 34 acres of land donated by the philanthropic Haugh family, the farm has become a cornerstone in the community, marrying sustainable agriculture with social rehabilitation. This provides a second chance to Caymanians in recovery from substance abuse, offering them meaningful employment and a path to rebuild their lives. The employment opportunities at the farm have significantly reduced the relapse rate among participants, demonstrating the profound impact of this initiative.

Beacon Farms has also been pushing the boundaries of traditional farming in the Cayman Islands. It has undertaken innovative agricultural practices, experimenting with a variety of crops including tobacco, coconuts, and other test crops like coffee, moringa, and beets. This is coupled with the development of a coconut oil factory, further diversifying its agricultural pursuits.

The farm's journey has not been without challenges. The team has had to overcome substantial obstacles, such as transforming the rocky terrain into fertile land, which was ingeniously solved by importing an Italian rock-crusher. This solution not only facilitated agricultural expansion but also symbolized the farm's resilience and innovative spirit. Environmental stewardship is another key aspect of Beacon Farms' mission. The farm is exploring environmentally friendly compost solutions to enhance crop growth. This approach exemplifies the farm's commitment to both agricultural innovation and ecological responsibility.



Community **SUPPORT**

JOIN OUR JOURNEY

Our vision is to be financially self-sufficient. Through sales of agricultural produce and manufactured goods, plus revenue generated by Beacon Farming Services, we expect to break even by the end of 2025. We just need help bridging the gap.

Beacon Farms' diverse sponsorship categories cater to a range of interests and commitment levels, each playing a crucial role in our mission.



PEOPLE CENTRED

Do you want to directly impact individuals' lives at Beacon Farms? Options like our 'Beacon of Hope' and 'Growing Our Future' sponsorship packages provide personal development and support, with benefits including personalized reports, event invites, and interactive opportunities.



PRODUCT CENTRED

Ideal for businesses seeking tangible branding opportunities, these packages offer visibility through farm assets like garden beds or greenhouses, alongside digital recognition and engagement in farm activities.



BE YOUR OWN BEACON

None of these right for you? We offer tailored packages aligning exactly with your corporate social responsibility goals. They can offer unique branding, product collaboration, and employee engagement opportunities, providing a bespoke partnership experience.



FRIENDS OF THE FARM

Engage with us through junior and adult memberships, fostering community involvement and continuous support for our initiatives. Members enjoy various benefits, including event invitations and discounts.



PARTNERSHIPS & VOLUNTEERS

We also welcome individuals and organisations that can offer us goods or services or volunteer their time to assist us in our journey towards becoming self-sufficient.

Each sponsorship package is uniquely designed to align with your business or individual goals while supporting our mission, ensuring a mutually beneficial partnership.

PEOPLE CENTRED

Sponsorship Packages

01 _ GROWING OUR FUTURE SPONSORSHIP PACKAGE

\$20,000

BENEFITS:

- **Naming Rights:** One-year naming rights to the Growing Our Future Sponsorship Package.
- **Visibility:** Monthly highlights on social media and quarterly features in e-newsletters.
- **Branding:** Your logo on Beacon Farms website and print literature.
- **Educational Outreach:** Opportunities to conduct workshops or talks on topics like business skills or environmental sustainability.
- **Impact Reports:** Regular updates detailing the progress and success of participants, offering a tangible measure of your sponsorship's impact.

This package is an ideal match for corporations seeking to make a meaningful difference in the community and environment, offering a comprehensive approach to corporate social responsibility.

The Growing Our Future Sponsorship Package is a unique opportunity for businesses to contribute to the cultivation of knowledge and skills in sustainable agriculture by sponsoring the training and experiential learning at Beacon Farms. This is the beginning of a new life for each and every person at Beacon Farms. This also allows Beacon Farms to innovate, breathing new life into agriculture in the Cayman Islands.

SOWING THE SEEDS OF KNOWLEDGE

The training that we provide to our staff is designed to foster agricultural literacy while reintegrating individuals into society with dignity and purpose. Participants engage in hands-on learning spanning subjects as diverse as advanced mechanized farming and hydroponics, to soil analysis and seed propagation, equipping them with the skills for a sustainable future. As they nurture the land, they also rediscover their potential.

But it doesn't end there. At Beacon Farms, we're not just planting seeds in the soil; we're also sowing the seeds of knowledge and growth in our community. Through our innovative educational programmes, we collaborate with schools and partners and offer guided tours, providing hands-on learning experiences that foster agricultural literacy, sustainability, and an understanding of food security.

PEOPLE CENTRED

Sponsorship Packages

02_ BEACON OF HOPE SPONSORSHIP PACKAGE

Starting from \$100

BENEFITS:

- **Impact Reports:** Receive updates on the impact of your support, including stories and progress reports from Beacon Farms.
- **Certificates of Appreciation:** We recognize your generosity with personalized certificates, showcasing your commitment to community development.
- **Farm Shop Perks:** Enjoy discounts at our farm shop as a token of our gratitude.

This opportunity allows your company to directly impact the lives of individuals at Beacon Farms, fostering a connection that goes beyond the traditional sponsor-beneficiary relationship.

FLEXIBLE AND IMPACTFUL GIVING:

Choose the level of support that aligns with your corporate values, with donations starting from a minimum of \$100.

- \$500 supports a staff member for a week.
- \$2,000 covers a month.
- \$5,000 ensures support for 10 weeks.
- \$25,000 provides comprehensive support for an entire year

PRODUCT CENTRED

Sponsorship Packages

Beacon Farms are proud to introduce a range of sponsorship packages structured to cater to a diverse range of sponsorship levels and interests, offering tangible branding opportunities for both businesses and individuals.

The packages are structured to offer you a clear and measurable return on investment, while also supporting the essential operations and projects at Beacon Farms.

Ranging from \$500 per annum to \$25,000 per annum there is something for businesses of every size.

01_ GARDEN BED

\$500

BENEFITS:

- Sponsorship an existing garden bed on the farm with a small, engraved plaque installed for at least 1 year. Please note this sponsorship will not create a garden bed, this will be the sponsorship/branding of an existing one.
- Recognition on “Meet Our Sponsors” page on farm website, including logo, link.
- Promotion of sponsors on social media.

02_ GREENHOUSE

\$5,000

BENEFITS:

- Engraved plaque displayed in the greenhouse. This will be the sponsorship/branding of the existing greenhouse, funds will not purchase a new greenhouse.
- Plaque contains name and logo, installed for a minimum of 1 year.
- Recognition on “Meet Our Sponsors” page on farm website, including logo, link.
- Promotion of sponsorship across farm social media channels, highlighted sponsor of the month
- Invitations to key farm events throughout the year.
- Private greenhouse and farm tour.
- Farm Shop discount.

PRODUCT CENTRED

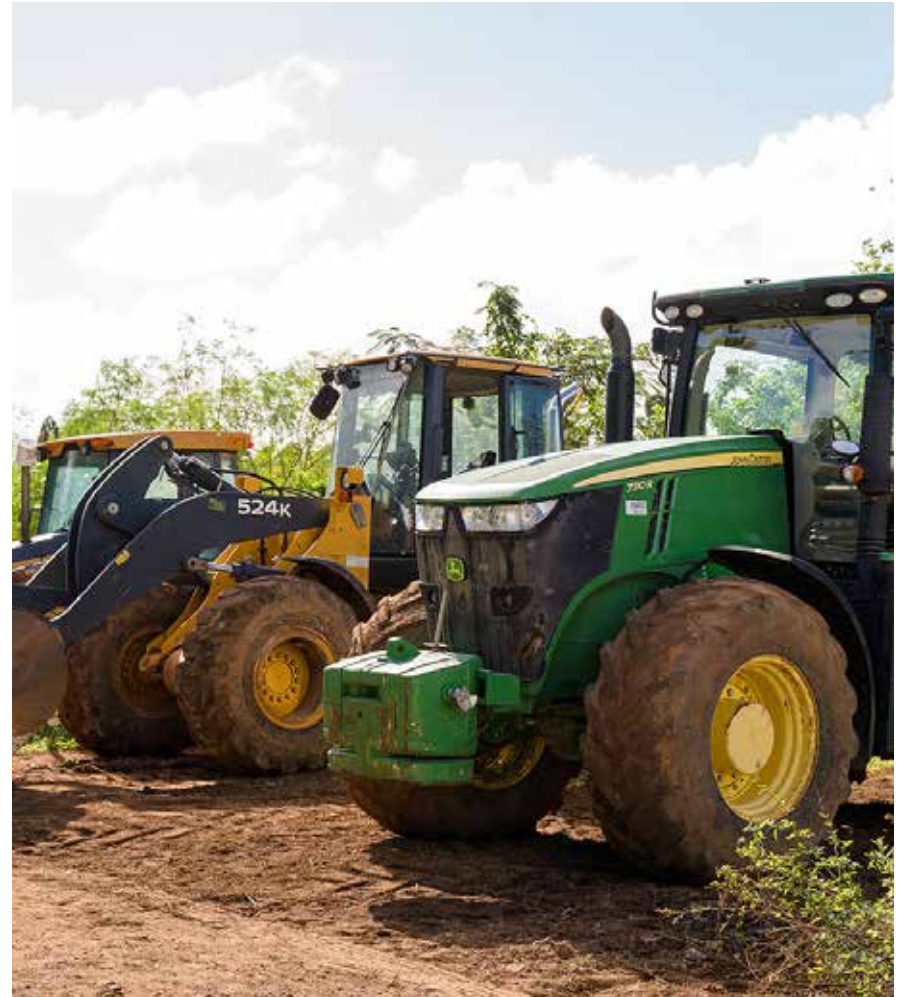
Sponsorship Packages

03_ FARM EQUIPMENT

\$10,000

BENEFITS:

- Sponsor a key piece of existing farm equipment. Please note these sponsorship funds will not purchase a new piece of farm equipment, this will be the sponsorship of an existing piece for branding purposes. Monies will be used for general Farm operations.
- Name and optional logo decal; installed for a minimum of 1 year.
- Recognition on “Meet Our Sponsors” page on farm website, including logo, link.
- Promotion of sponsorship across farm social media channels, highlighted sponsor of the month.
- Invitations to key farm events throughout the year.
- Private farm tour experience.





THE BIG ONES

Sponsorship Benefits

At Beacon Farms, we have several major sponsorship packages available.

These are tailored to give businesses and partners a significant role in our work. Each package offers distinct benefits, providing value and impact for our sponsors.

These sponsorship packages include a wide range of benefits for your business

01_

MEDIA & PUBLIC RELATIONS

BENEFIT SUMMARY:

- **Press Releases:** Mention as a key sponsor in all press releases and media communications.
- **Media Coverage:** Inclusion in any interviews or media coverage related to the project.
- **Social Media Promotion:** Regular mentions and features on the project's social media channels.
- **Recognition:** on "Meet Our Sponsors" page on farm website, including logo, link.

02_

EXCLUSIVE ACCESS & EXPERIENCES

BENEFIT SUMMARY:

- **VIP Tours:** Private tours of the facility and the farm for your representatives.
- **Special Events:** Invitations and free tickets to any events, ceremonies, or special occasions related to the project.

03_

REPORTING

BENEFIT SUMMARY:

- **Impact Reports:** Regular updates and impact reports detailing the project's progress, environmental benefits, and social impacts.
- **Sustainability Credentials:** Recognition in sustainability reports and materials, highlighting your commitment to environmental and social causes.

04_

EMPLOYEE ENGAGEMENT

BENEFIT SUMMARY:

- **Volunteer Opportunities:** Opportunities for your employees to engage in volunteer activities related to the project.
- **Educational Workshops:** Access to exclusive workshops or seminars on composting, sustainable agriculture, and related topics for your employees.

05_

CUSTOMIZED SPONSORSHIP

BENEFIT SUMMARY:

- **Tailored Experiences:** Ability to work with the project team to create customized engagement opportunities that align with your specific interests or corporate social responsibility goals.

06_

FIRST RIGHTS TO FUTURE SPONSORSHIP

BENEFIT SUMMARY:

- **Preferential Consideration:** First right of refusal for future sponsorship opportunities or expansions of the project.

THE BIG ONES

Sponsorship Packages

01_ FARM SHOP SPONSOR

\$25,000

BENEFITS:

- Naming rights to the Beacon Farms Farm Shop for 1 year.
- Prominent signage with logo/name displayed on the exterior of the shop.
- Branded aprons worn by farm stand employees.
- Logo placement at farm shop checkout counters.

02_ EQUIPMENT PURCHASING

\$CUSTOM

Staying at the forefront of agricultural innovation and efficiency is a constant endeavor, and this requires the latest in farming equipment.

If your business is interested in making a direct impact, consider funding new equipment for the farm. Your contribution can facilitate the acquisition of advanced machinery, tools, or technology that are essential for modern, sustainable farming practices. Such equipment could range from high-efficiency irrigation systems, eco-friendly tractors, to advanced soil testing kits, all of which are crucial for improving farm productivity and environmental sustainability.

We are always happy to talk to potential sponsors about direct investments in equipment that we really need to improve.

CUSTOM PACKAGES

Corporate Sponsorship

BE YOUR OWN BEACON

Beacon Farms offers Custom Corporate Packages, named Be Your Own Beacon, designed to align seamlessly with your company's unique Corporate Social Responsibility (CSR) goals. These packages are highly customizable, allowing your business to choose how its contributions are utilized, ensuring that your corporate values and objectives are reflected in your sponsorship.

These packages allow for a variety of involvement levels, from on-the-ground engagement in sustainable farming projects to support for community outreach and educational initiatives. This flexibility ensures that your company can make a meaningful impact in areas that resonate most with your brand and stakeholders.

By partnering with Beacon Farms, your company not only contributes to a worthy local cause but also enhances its CSR profile. Whether it's through environmental stewardship, community development, or supporting recovery and growth, these packages offer a unique opportunity to demonstrate your commitment to making a positive impact in the Cayman Islands.



FRIENDS OF BEACON FARMS

Annual Membership Programme

We invite you to join our journey as a member, supporting our mission while enjoying unique benefits.

Our annual membership programme is designed for individuals who share our passion for agriculture and community development.

Join us today and be a part of shaping a greener, more sustainable future for the Cayman Islands.

Together, we grow.

01_

JUNIOR MEMBERSHIP

\$75 per annum

-
- Ideal for the younger generation, this membership includes a special thank you card/welcome pack, subscription to our informative email newsletter, a unique pin badge, and recognition on our website.
 - Its purpose is to engage youth in sustainable farming and environmental stewardship, fostering early interest in agriculture and food security.
-

02_

ADULT MEMBERSHIP

\$150 per annum

-
- Offers a comprehensive package including a thank you card/welcome pack, regular updates through our email newsletter, a discount at our Farm Shop, your name on our website, and invitations to any Beacon Farms events.
 - Its purpose is to deepen your connection and support for Beacon Farms with more involvement opportunities, enhancing our mission's impact.
-



DONATIONS COUNT

Beacon Farms, with its deep roots in Cayman's soil, is a lot more than just a place of work.

Your sponsorship of Beacon Farms contributes significantly to this impactful journey, and more than anything you are making a difference to individuals and the country as a whole.

By supporting the farm, you are: helping us achieve:

01_

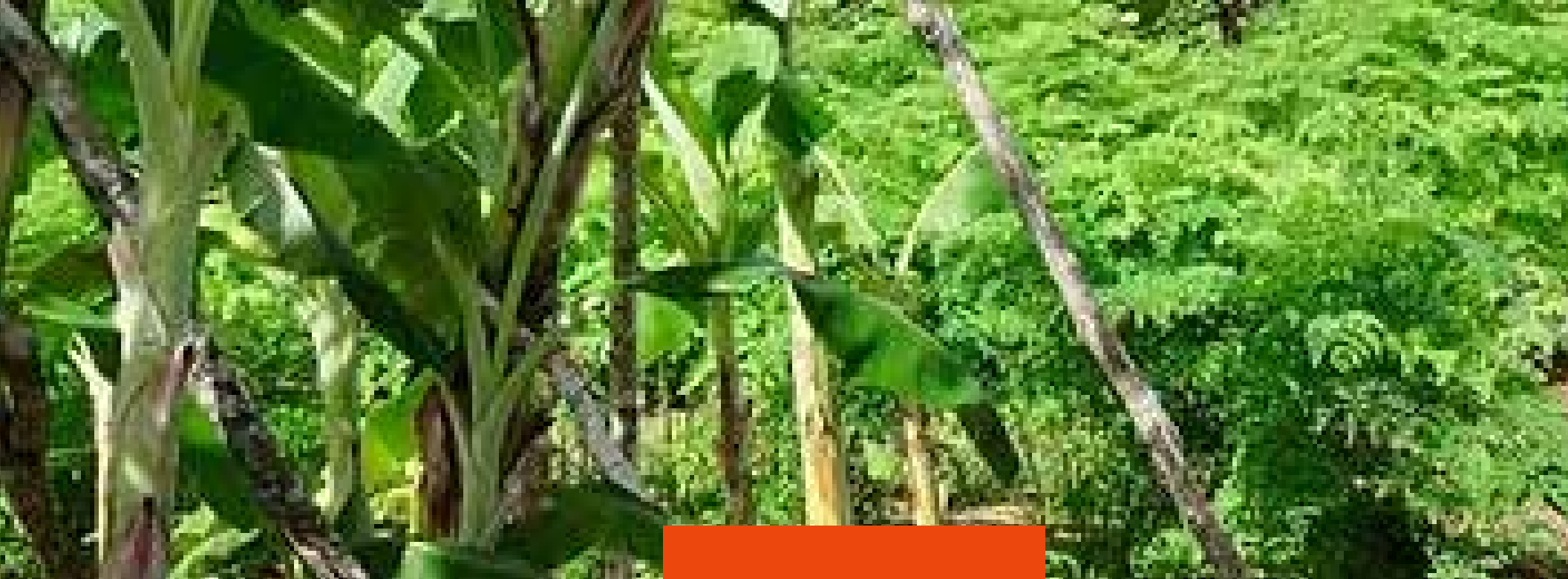
HEALTHIER COMMUNITY

Directly aiding in the rehabilitation and employment of individuals, thereby fostering a stronger, healthier community.

02_

ADVANCED AGRICULTURE

Advancing sustainable agricultural practices in the Cayman Islands, making us more self-sufficient as a nation.



GET IN TOUCH

**Heard enough and want to get involved?
Or simply want to know more?**

We are here and waiting to hear from you.
Contact us today and take the first step
to joining the Beacon Farms family.

BEACONFARMSCAYMAN.ORG

CONTACT_

**ANDY
HUTCHINSON**

● **+1 (345) 525 6157**

● **andy@tower.com.ky**